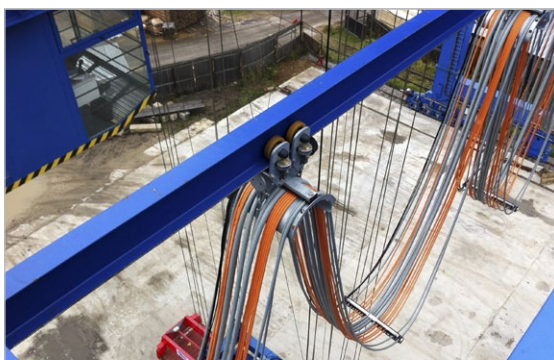


## Reference

### RMG Container Crane



### Motorized Cable Reel „Sprinter“

**Installation description**  
RMG Container Crane

**Country**  
Russia

**City**  
Podolsk, Moscow Region

**Project installation date**  
2012

**Representative office**  
Conductix-Wampfler [RUS]

**Operator**  
Ruskon [Mosagronauchpribor]

**Technical requirement[s]**

- Main power supply of the Container Crane [Motorized Cable Reel]
- Power supply to the crab [Festoon System for I-Beam]

**System course**  
Straight

**Travel distance [Load]**

- 150 m [Motorized Cable Reel]
- 53 m [Festoon System for I-Beam]

**Travel speed [Load]**

- 60 m/min [Motorized Cable Reel]
- 40 m/min [Festoon System for I-Beam]

**Max. Acceleration [Load]**

- 0,20 m/s<sup>2</sup> [Motorized Cable Reel]
- 0,15 m/s<sup>2</sup> [Festoon System for I-Beam]

**Product[s]**

- Motorized Cable Reel „Sprinter“
- Heavy Festoon System

**Mounting height[s]**  
4,5 m [Motorized Cable Reel]

**Drive unit**

- 3-Phase motors with magnetic clutch
- Control realized with Siemens components

**Winding length**  
75 m [Motorized Cable Reel]

**Power feed**  
Center feed [Motorized Cable Reel]